



***dacor***<sup>®</sup>

Family-Owned. American-Made.

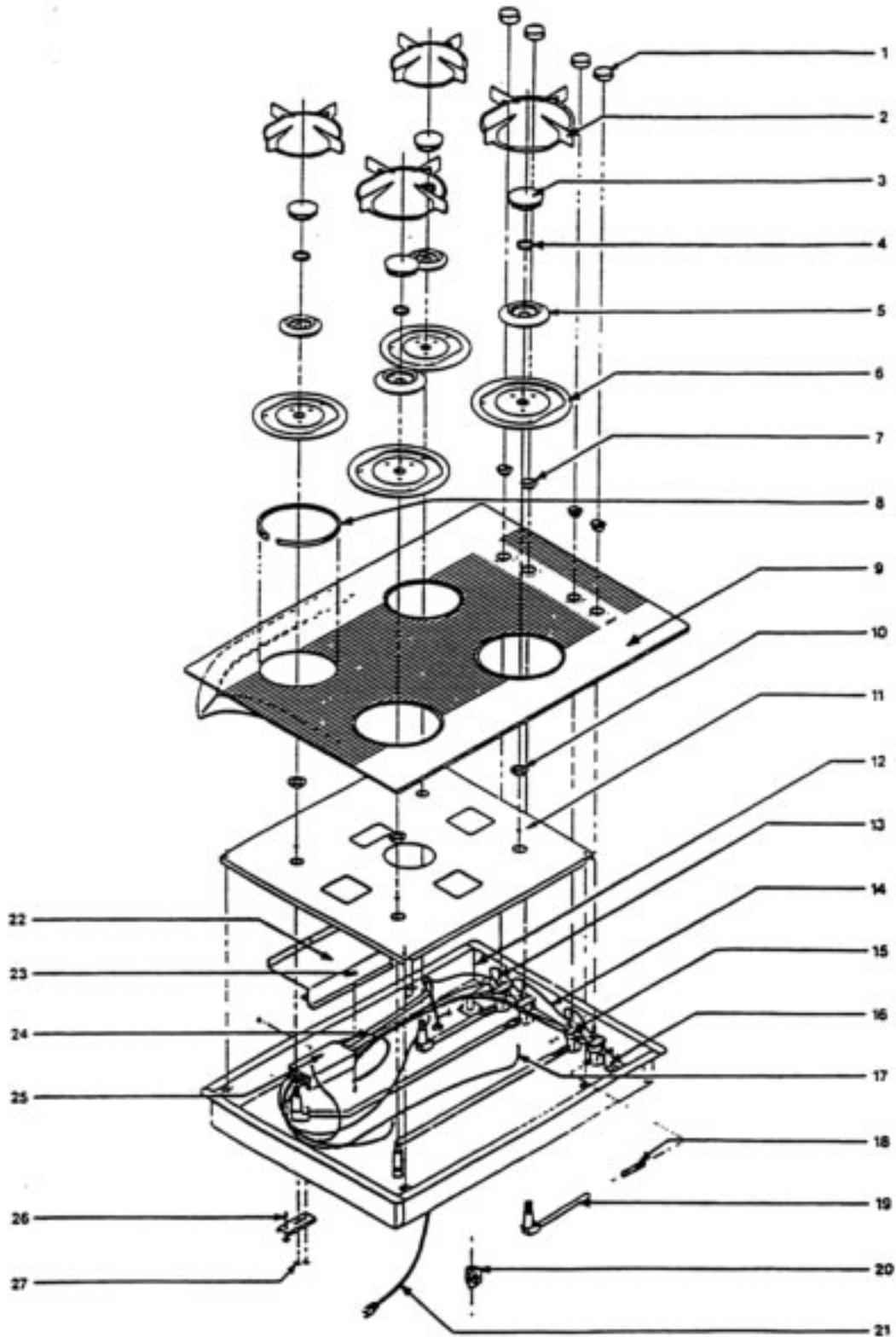


**PARTS  
CATALOG**

**GGC Cooktop**

<b>GGC304</b>	<b>GGC365</b>
---------------	---------------

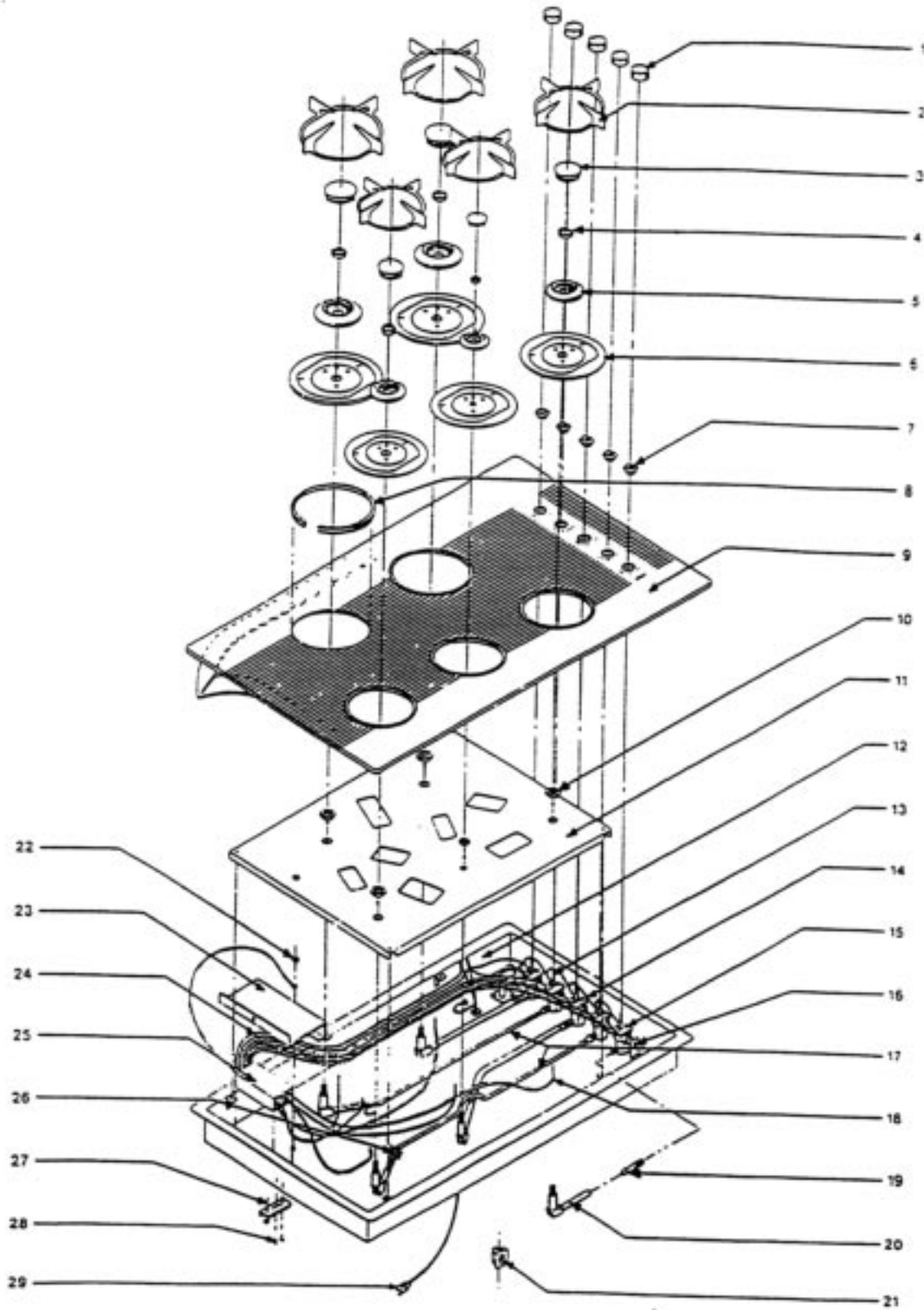
# GGC304



## GGC304

REF#	PART #	DESCRIPTION
1	82002A,B,W	KNOB
2	82314AP, BP, WP	GRATE - LARGE
*	82315AP, BP, WP	GRATE - SMALL
3	86011	B BURNER CAP - SMALL - 9000 BTU
*	86012	C BURNER CAP - LARGE - 12000 BTU
4	86405	BURNER ATTACHMENT RING
5	86762	B BURNER WITH IGNITOR AND O-RING
*	86763	C BURNER WITH IGNITOR AND O-RING
6	26189AP, BP, WP	SPILL TRAY LARGE - 12000 BTU
*	26191AP, BP, WP	SPILL TRAY SMALL - 9000 BTU
7	82085A, B, W	SPILL PROTECTOR, GLASS MOUNT
8	82008	SPILL TRAY GASKET, SMALL
*	82398	SPILL TRAY GASKET, LARGE
9	86050A, B, W	30" GLASS TOP WITH CHASSIS SEAL
10	86019	BURNER PIPE NUT, B AND C
11	78246	BURNER SUPPORT - 304
12	27040	CHASSIS ASSEMBLY - 304
13	86039	B VALVE
*	86040	C VALVE
14	14287	SWITCH CABLE ASSEMBLY
15	86046	SPARK SWITCH
16	86044	MANIFOLD W/VALVES - 304
17	14301	SPARK PLUG REPLACEMENT WIRE, GGC'S
18	86041	SHUTTER - B BURNER
*	86042	SHUTTER - C BURNER
19	86047	FEED PIPE - RF AND RR
*	86048	FEED PIPE - LF
**	86049	FEED PIPE - LR
20	82540	REGULATOR
21	12179	POWER SUPPLY CORD
22	26202	IGNITOR BOX HOLD DOWN SHIELD
23	83048	8-32 KEPS NUT
24	13120	HARNESS SWITCH TO IGNITOR BOX
25	82316	IGNITOR BOX
26	12277	HOLD DOWN BRACKET
27	83306	8 X 3/8 PHILIPS HEAD SCREW

# GGC365



## GGC365

REF#	PART #	DESCRIPTION
1	82002A, B, W	KNOB
2	82314AP, BP, WP	GRATE - LARGE
*	82315AP, BP, WP	GRATE - SMALL
3	86011	B BURNER CAP - SMALL
*	86012	C BURNER CAP - LARGE
**	86008	H BURNER CAP - SIMMER
4	86405	BURNER ATTACHMENT RING B&C
*	86406	BURNER ATTACHMENT RING
5	86762	B BURNER
*	86761	C BURNER
**	86013	H BURNER WITH IGNITOR AND O-RING
6	26189AP, BP, WP	SPILL TRAY LARGE 12000 BTU
*	26191AP, BP, WP	SPILL TRAY SMALL 9000 BTU
**	26190AP, BP, WP	SPILL TRAY SIMMER - 1650 BTU
7	82085A, B, W	SPILL PROTECTOR, GLASS MOUNT
8	82008	SPILL TRAY GASKET, SMALL
*	82398	SPILL TRAY GASKET, LARGE
9	86051A, B, W	GLASS TOP WITH CHASSIS SEAL
10	86019	BURNER PIPE NUT, B AND C
*	86018	BURNER PIPE NUT, H
11	78254	BURNER SUPPORT
12	27041	CHASSIS ASSEMBLY
13	86039	B VALVE, 9000 BTU
*	86040	C VALVE, 12000 BTU
**	86038	H VALVE - 1650 BTU
14	14309	SWITCH CABLE ASSEMBLY
15	86046	SPARK SWITCH
16	86045	MANIFOLD W/VALVES
17	86024	TUBE ASSEMBLY - VALVE TO LF
*	86025	TUBE ASSEMBLY - VALVE TO LR
18	14301	SPARK PLUG REPLACEMENT WIRE
19	86041	SHUTTER, GGC H AND B BURNERS
*	86042	SHUTTER GGC C BURNER
20	86020	FEED PIPE - RF
*	86021	FEED PIPE, LF AND LR
**	86022	FEED PIPE - MID FRONT
***	86023	FEED PIPE - RR
21	82540	REGULATOR
22	26202	MOUNTING BRACKET - IGNITION MODULE
23	13121	HARNESS SWITCH TO IGNITOR BOX
24	82317	IGNITOR BOX
25	86034	REMOTE JET HOLDER - SMALL 9000 BTU
*	86035	REMOTE JET HOLDER - LARGE 12000 BTU
26	12277	HOLD DOWN BRACKET
27	83306	83306 #8 X 3/8 PHILLIPS HEAD SCREW
28	12179	POWER SUPPLY CORD